



The mission of the  
Women's Caucus for Art  
is to create community  
through art, education and  
social activism

We are committed to

recognizing the contribution of  
women in the arts

providing women with leadership  
opportunities and professional  
development

expanding networking and exhibition  
opportunities for women

supporting local, national and global  
art activism

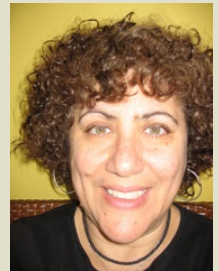
advocating for equity in the arts

P.O Box 1498  
Canal Street Station  
New York, NY 10013  
212.634.0007  
[nationalwca.org](http://nationalwca.org)

May 24, 2011

## WCA President's Update

from the desk of Janice Nesser-Chu



### May Comes in Like a Lion

May has been a very busy month for WCA. During the first week of the month, President-elect Priscilla Otani and I traveled to sunny Los Angeles to begin the planning for the 2012 WCA Conference 'Momentum' and LTA Awards. 2012 marks the 40th anniversary of the Women's Caucus for Art and we are planning some very special activities for the conference. Save the Dates: February 23-27, 2012. In addition, I would like to encourage our chapters to plan 40th anniversary celebrations, exhibitions, lectures,..throughout the year. WCA is developing a calendar on the website to list all the 40th anniversary activities happening across the country. More information on this will follow in the next few months.

I have been working with the Midwest Region and St. Louis Chapter President Roxanne Phillips on the July Midwest Region *Art & Social Justice* Conference. The panel line up is amazing and promises to be a thought-provoking and informative day. The Conference kicks off three days of activities for WCA members that also includes exhibition openings, a bus tour, WCA members forum and WCA Board meeting. Please join us July 22-24 in St. Louis! More information on the activities are listed below.

The WCA newsletter *ARTLINES* went to press this week. You should be receiving it in your mailbox in the next couple of weeks. Make sure to check it out to read about the NY Conference, the announcement of the 2012 Lifetime Achievement Awardees, Chapter News and more.

As I sit here typing, I am listening to the t.v. news broadcasting severe thunderstorms and tornadoes warnings for areas in the Midwest. April and May have been a time of great loss from floods and tornadoes for many of our members and friends throughout the Southwest, South and Midwest. In last month's update, I listed possible charities where you could donate food, clothing and money. I again encourage our membership to reach out to help in whatever way you can.

I wish you all a safe and happy Memorial weekend.

### **CALL for NOMINATIONS for President-Elect**

WCA is accepting application's for our next President Elect. The deadline to apply is June 30.

The President Elect will serve a 6-year term on the Board. The term begins with President Elect (2012-13), then President (2014-2015) and finally, Past President (2016-2017). WCA is looking for nominees with outstanding leadership qualities, prior administrative experience and national or local board experience.

**To view the qualifications/descriptions:** [www.nationalwca.org](http://www.nationalwca.org) Log into the membership portal, click on *my membership*, and then click on *WCA documents*. Nominees should makes sure they have read the qualifications and descriptions and are prepared to carry out the duties.

To be considered please forward the following information by **June 30** to [nominations@nationalwca.org](mailto:nominations@nationalwca.org) (All information should be forwarded in WORD .doc formats)

1. Resume
2. Short bio
3. Brief statement addressing: why you want to be the President; what skills you will bring to the table; your leadership style and your vision for WCA.
4. 1 or 2 letters of recommendation

### **Submit names to the Lifetime Achievement Award Nominee Database**

The Honors Awards process for 2013 LTA Awards in New York has begun! Current WCA members can submit names for consideration or update infomation already in the database through the membership

portal. To access the database, go to [www.nationalwca.org](http://www.nationalwca.org) login in to the membership portal, click on membership and then click on LTA database. Information on how to submit is included on the page. **The deadline to submit names for consideration for 2013 is June 30.**

**Join us in St. Louis!**

## **Summer WCA Conference & Board Meeting**

**July 22-24**

The summer board meeting and regional conference will be hosted by the Midwest Region in St. Louis, MO, July 22–24.

There will be two full days of activities leading up to the annual WCA Board meeting. Chapter reps have always been welcome at the summer Board meeting, but we are encouraging all chapters to send a rep, as well as encouraging all members, to come out, to learn, to participate and to network. There will also be a special OPEN FORUM focusing on team building and the future of WCA on Saturday morning.

WCA has reserved a block of rooms at the Moonrise Hotel, 6177 Delmar Blvd in *The Loop*. The rate is \$119 a night, and it is available three days prior and after the WCA events. Call 314-721-1111 for reservations. Use the code Women's Caucus for Art. The rate includes complimentary self parking, access to the business and fitness center, and high speed Internet access. The hotel is across the street from the Regional Arts Commission where the *Art & Social Justice* Conference, the WCA Open Forum, and WCA Board meetings will be held. Spaces are limited. **Rates are only guaranteed until June 30**, so make your reservation today! We will also have a few in-home stays available. Check the June President's update for information on home stays.

We would like to have a head count and contact information for everyone who's attending by Monday, June 27. Please email the following info to [president@nationalwca.org](mailto:president@nationalwca.org) - your name, cell phone number, arrival date and information, departure date and information, hotel, and which events you'll be attending.

### **SCHEDULE OF EVENTS**

#### **Thursday, July 21**

**Early check in** - Visit some of St. Louis's great museums and galleries or walk around The Loop, an area filled with restaurants, galleries, and

nightly activities. More details on exhibitions and activities will be available in the July President's email update.

**Time TBA** - WCA Executive Committee meeting

**6 pm** - Possible dinner get-together

### **Friday, July 22**

**9 am–4 pm** - *Art & Social Justice* Conference, Regional Arts Commission, 6128 Delmar Blvd.

For a list of the panels and to register: <http://wcaartsocialjustice.conference.eventbrite.com/>

*Please do not contact the Regional Arts Commission for tickets.*

Tickets for the conference (includes box lunch):

Early registration (before June 30) - \$35.

Regular registration (after June 30) - \$45

Student registration - \$25

**7–9 pm** - Opening for Midwest region national exhibition, *Themis* at Bouileau Hall, Saint Louis University, 35 N. Vandeventer Ave.

### **Saturday, July 23**

**9–11 am** - OPEN FORUM with the WCA Board at the Regional Arts Commission, 6128 Delmar Blvd.

**Noon– 5 pm** - WCA Bus Tour

Cost - \$30 (includes buffet lunch)

Register at [http://wcaartsocialjustice](http://wcaartsocialjustice.conference.eventbrite.com/)

[conference.eventbrite.com/](http://wcaartsocialjustice.conference.eventbrite.com/) Tentative schedule: Young Women's Caucus Traveling Journal exhibit at Florissant Valley Contemporary Art Gallery; a visit to the GYA Cooperative (the first African American Women's Art Cooperative in STL); a visit to City Museum, formerly International Shoe Company, the 600,000 sq. ft. museum is an eclectic mixture of surrealistic pavilion, and architectural marvel made out of unique, found objects and a reception at ArtSpace at Crestwood Court, a former shopping mall repurposed as an art center.

**6:30–10 pm.** STL Chapter hosted dinner at the home of WCA President Janice Nesser-Chu

### **Sunday, July 24**

**8 am–4 pm.** WCA Board Meeting, Regional Arts Commission, 6128 Delmar Blvd.

*Board members should plan their departure times so that they are able to attend the entire meeting.*

WCA on [FACEBOOK](#)

[president@nationalwca.org](mailto:president@nationalwca.org)

---

[Click to view this email in a browser](#)

If you no longer wish to receive these emails, please reply to this message with "Unsubscribe" in the subject line or simply click on the following link: [Unsubscribe](#)

[Click here](#) to forward this email to a friend

Women's Caucus for Art  
PO Box 1498  
Canal St Station  
New York, New York 10013-1498  
US



[Read](#) the VerticalResponse marketing policy.